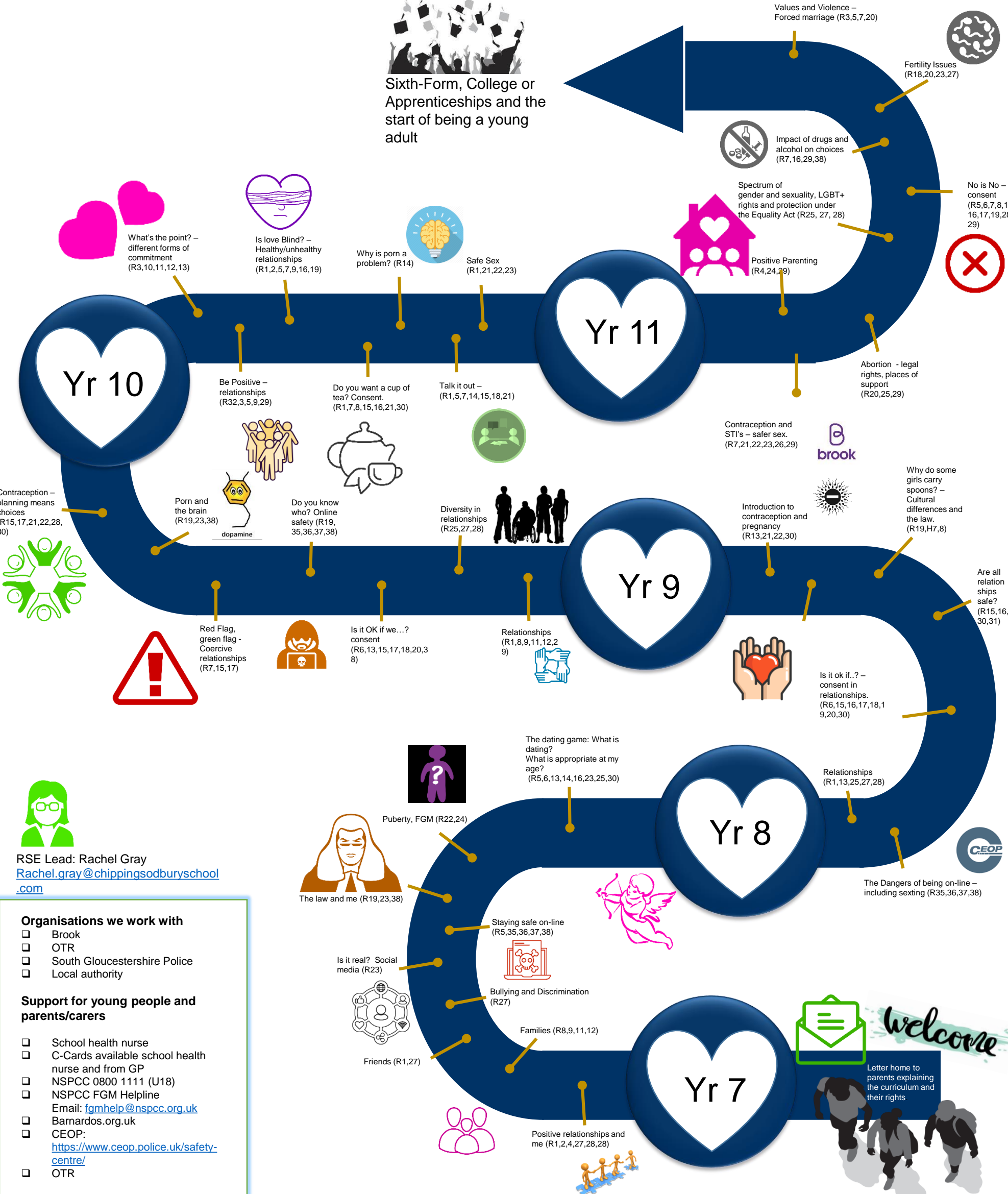


Relationship and Sex Education at Chipping Sodbury School 2023-4



Sixth-Form, College or Apprenticeships and the start of being a young adult



RSE Lead: Rachel Gray
Rachel.gray@chippingsodbury.school
www.chippingsodbury.school

- Organisations we work with**
- Brook
 - OTR
 - South Gloucestershire Police
 - Local authority
- Support for young people and parents/carers**
- School health nurse
 - C-Cards available school health nurse and from GP
 - NSPCC 0800 1111 (U18)
 - NSPCC FGM Helpline
Email: fgmhelp@nspcc.org.uk
 - Barnardos.org.uk
 - CEOP:
<https://www.ceop.police.uk/safety-centre/>
 - OTR

Numbers in brackets refer to PSHE Assoc. Mapping of RSE